



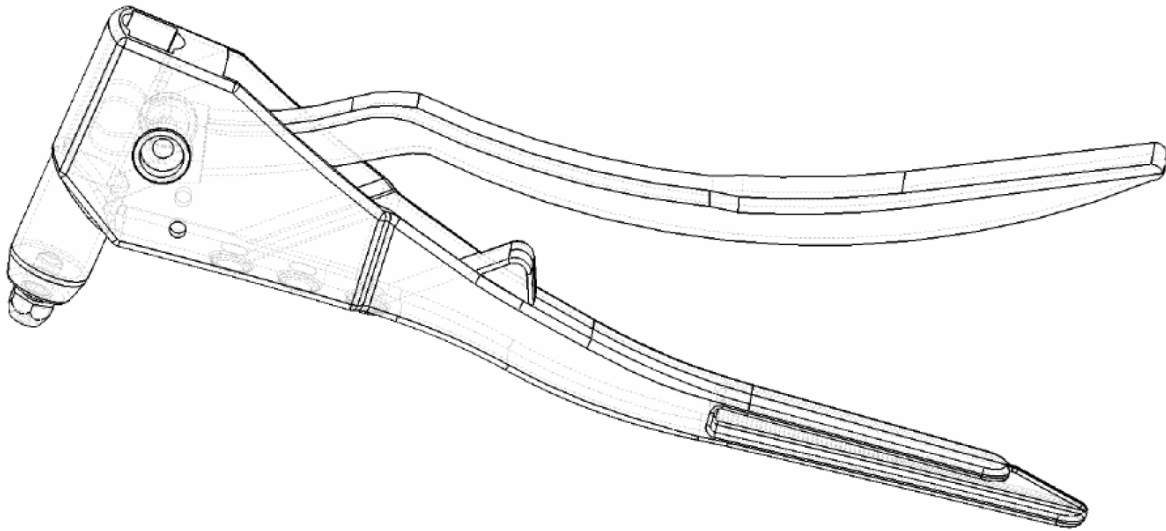
RIVETKING MODEL# RK-20B

Set blind, nut, and anchor rivets with one tool!

Use blind rivets for positive fastening and reduced vibration.

- Includes nosepieces for 3/32", 1/8", 5/32", and 3/16" blind rivets
- Nut rivets are perfect for reusable threads in sheet metal
- One squeeze fastens hollow wall anchors
- Maximum rivet capacity: 3/16"

Includes: 3/32", 1/8", 5/32", and 3/16" blind rivet nosepieces. Threaded nut sizes: 6-32, 8-32, 10-24, 1/4"-20; Anchor mandrel lengths: 1-1/4" and 2-3/8"
Weight: 1.9 lbs.



CAPACITY:

3/32" / 2.4mm (all materials)

1/8" / 3.2mm (all materials)

5/32" / 4.0mm (all materials)

3/16" / 4.8mm (all materials)

Industrial Rivet & Fasteners Co. offers a comprehensive tool service and repair program, for details contact your local area sales representative or call direct:



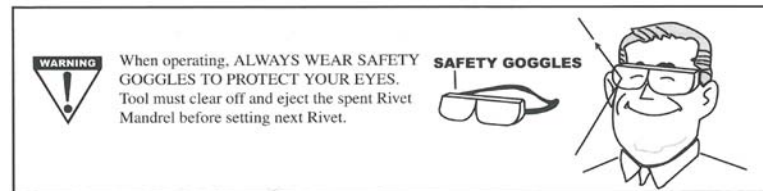
200 Paris Avenue
Northvale, NJ 07647
Tel: (201) 750-1040
Fax: (201) 750-1050

RK-20 OPERATORS MANUAL



INSTRUCTIONS:

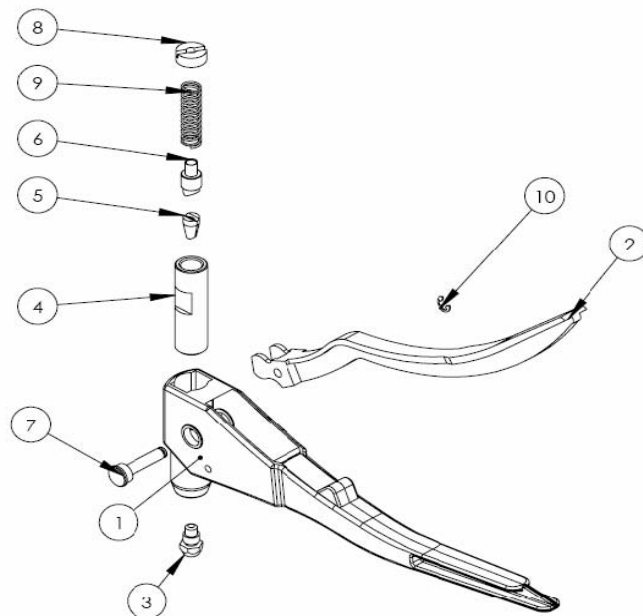
1. Choose the proper nose piece(3) for the rivet you wish to install. Various sizes are located
2. along the housing of the tool and can be applied using the wrench provided on the handle.
3. Tighten the nose piece.
4. With the handle open, apply the nail side of the rivet through the hole of the nose piece until the head of the rivet touches the face of the nose piece, or you may choose to install the rivet into the work piece first. The rivet should fit snug in the nose piece.
5. Squeeze the handle until the rivet "pop's". Depending on the rivet size, the grip range and the hole diameter, this may take a few strokes.
6. When the rivet "pop's", open the handle to release the spent nail. Discard spent nails in a suitable recycling or trash receptacle.
7. Repeat as necessary



JAW CLEANING AND/OR REPLACEMENT PROCEDURE:

1. Remove Jaw Case Screw(8) using the edge of the wrench provided or a slotted screw driver. Note: There is **NO** need to remove Pin(7)
2. Remove Jaw Spring(9), Jaw Pusher(6) and both pieces of Jaws(5)
3. Clean, Inspect and Replace Jaws(5), Jaw Spring(9) or Jaw Pusher(6) as necessary.
4. A light coating of grease may be applied to the **OUTSIDE** of the jaws(5)
5. Re-assemble in reverse order

Part#	Descriptions
1	Body
2	Handle
3	Nose Piece
4	Jaw Case
5	Jaws
6	Jaw Pusher
7	Pin
8	Jaw Case Screw
9	Spring
10	E4 Washer



TO PREVENT SERIOUS INJURY, READ AND UNDERSTAND ALL WARNINGS AND INSTRUCTIONS BEFORE USE.

WARNING: When using tool, basic safety precautions should always be followed to reduce the risk of personal injury and damage to equipment. Read all instructions before using this tool!

1. **Pinch Danger.** If not properly used, the scissor-like action of this tool may cause pinch injury. Wear protective gloves and be careful to avoid pinch injury.
2. **Small pieces choking hazard.** During riveting, small pins are left as waste. Dispose of rivets and all small pieces properly.
3. **Prevent eye injury.** Wear ANSI approved eye protection when using this tool to prevent eye injury.
4. **Keep children away.** Do not let children handle rivets, rivet pins or other small parts.

Warning: The warnings, cautions, and instructions discussed in this instruction manual cannot cover all possible conditions and situations that may occur. It must be understood by the operator that common sense and caution are factors which cannot be built into this product, but must be supplied by the operator.

NOTE: Rivets, rivet nuts and anchor rivets are not supplied with this kit. They must be purchased separately.

To install Blind Rivets (3/16", 5/32", 1/8" or 3/32"):

1. Drill the proper sized hole for the rivet you are using.
2. Select and install the correct Nosepiece (11, 12, 13 or 14). Nosepieces have a standard right hand thread for installing and removing.
3. Place the rivet in the hole, and place the Nosepiece over the stem of the rivet.
4. Squeeze the handle once or twice until the stem snaps off the rivet.
5. Open the handle and turn the tool upside down to allow the stem to fall out.

To install Nut Rivets and Rivet Nuts, you must change the Case. Rivet Nuts and Blind rivets use the same Case.

Changing the Case:

1. Remove any installed Nosepiece by turning it counterclockwise.
2. Remove The screw (8) (Step 1)
3. Remove spring (9) , Jaw Pusher (6) (Step 1)
4. Remove the Jaws (15) from the tool. (Step 1)
5. Insert the Nut & Anchor Case (Step 2)
6. Insert the Screw nut.

To install Rivet Nuts (¼-20, 10-32, 8-32 or 6-32):

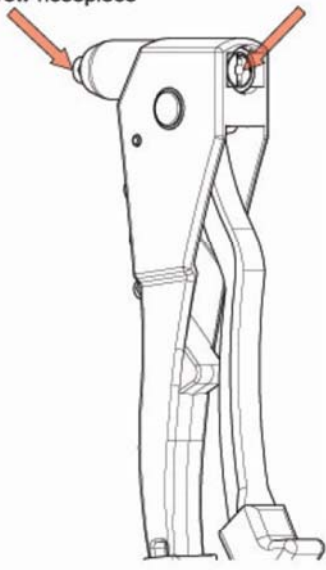
1. Drill the proper sized hole for the Rivet Nut to be used.
2. Thread the proper Nut Mandrel (¼-20, 10-32, 8-32 or 6-32) onto the Nut & Anchor Case.
3. Thread the Rivet Nut onto the Mandrel.
4. Insert the Rivet Nut into the hole and squeeze the handle. This will expand the Rivet Nut in the hole.
5. Unscrew the tool from the Rivet Nut.

To install Anchor Rivets (6-32x1-¼" or 6-32x2-3/8"):

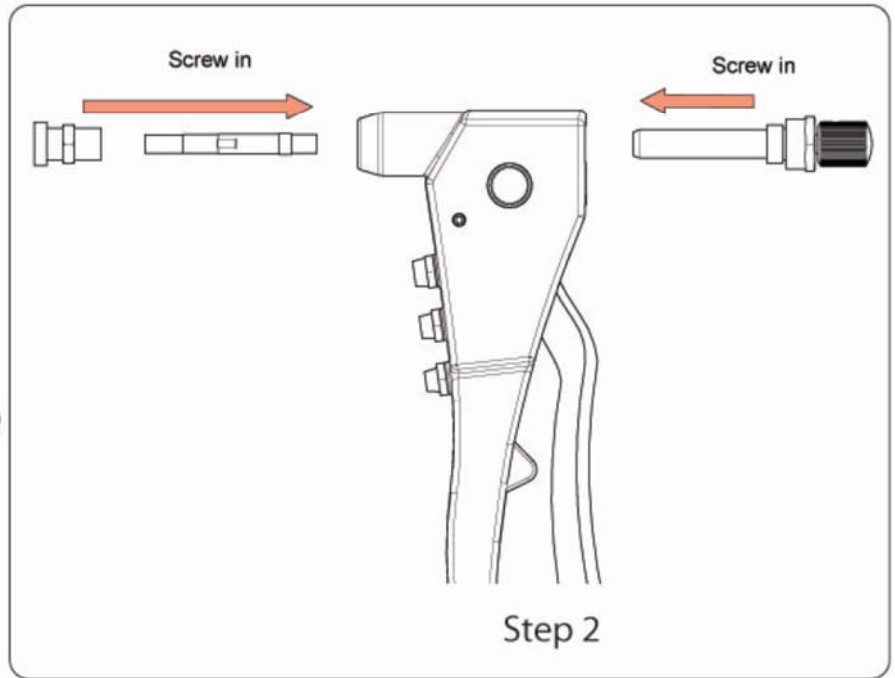
1. Drill the proper sized hole for the Anchor Rivet to be used.
2. Thread the proper Anchor Mandrel (25 or 26) onto the Nut & Anchor Case.
3. Thread the Anchor Rivet onto the Mandrel.
4. Insert the Anchor Rivet into the hole and squeeze the handle. This will expand the Anchor Rivet in the hole.
5. Unscrew the tool from the Anchor Rivet.

Unscrew nosepiece

Unscrew and remove the parts inside



Step 1



Step 2