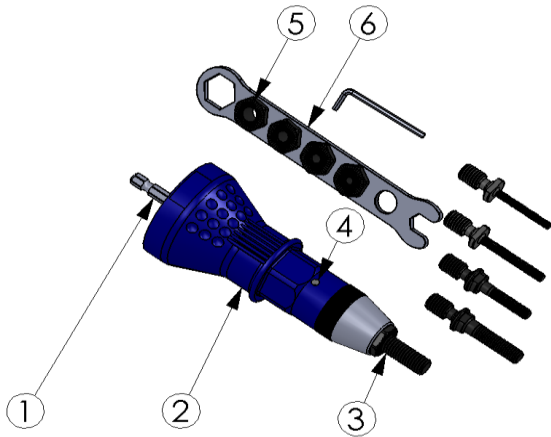
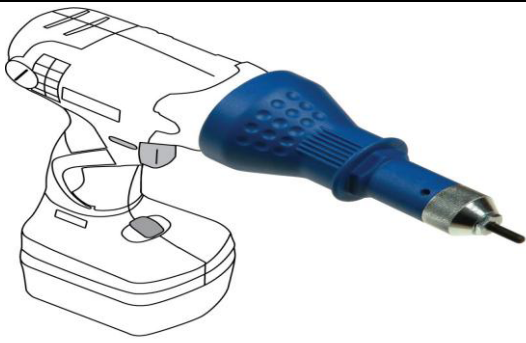


RD-600 Rivet Nut Adaptor



Safety Note

Please note the following safety notes to avoid malfunctions, damage or physical injury:

- Please observe all safety notes of the used driving tool (drill)
- Always switch off the driving tool and pull the power plug before maintaining the blind nutting attachment, e.g. changing the nosepieces or when not in use.
- Only use the blind nutting attachment as indicated in this manual for setting blind nuts. The unit is not designed for continuous, professional use.
- Always secure the work piece.
- Do not wear loose, clothing or jewellery. Tie up hair or clothing cannot get into moving parts.
- Persons with limited physical, sensorial or mental abilities are not allowed to use the unit, unless they are supervised for their safety by a qualified person or are briefed by the responsible person how to use the unit.
- Only use the blind nutting attachment with the included nosepieces.
- Should the unit become damaged do not use it and have it repaired by a professional or contact our customer support department. Do not disassemble the unit or try repairing it yourself.
- Do not continue using the unit if it was damaged or the unit was dropped down. Please contact our customer support service.

Technical Data

Dimensions	Dia.59 x 180mm
Weight	300g
Nosepiece	8-32, 10-24, 10-32, 1/4-20, 5/16-18, 3/8-16
Capacity	8-32, 10-24, 10-32, 1/4-20, 5/16-18
Capacity	3/8-16(only Aluminum)
Hex Shank	8mm
Cordless Drill	14.4V , 18V
Cordless Drive	14.4V , 18V
Reversible electric	Drill/Drive
Reversible pneumatic	Drill/Drive
Min. Torque Strength	100 N.M.= 73.7 ft/lbs
Max. rpm	800 rpm

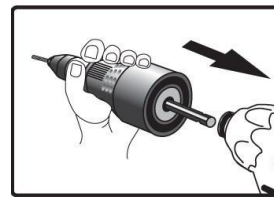
Overview

1	Hex Shank	8mm
2	Housing	PA+GF
3	Screw	3/8-16
4	Sight Window	Blind Nut Loading
5	Nosepiece	8-32, 10-24, 10-32, 1/4-20, 5/16-18
6	Wrench	1PC

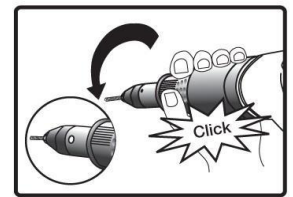
Assembling and Using

Before first Use

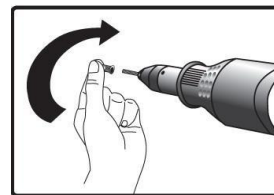
Remove the unit and the accessory out of the packaging. Keep packaging materials out of reach of children. There is risk of suffocation.



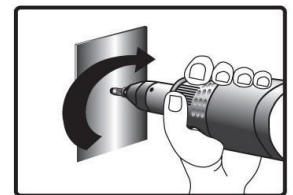
1



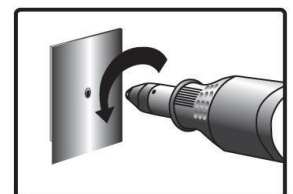
2



3



4



5